

# CITY OF PORT WASHINGTON 2025-26 Utility Extensions County LL to Highland Drive

Weekly Construction Update

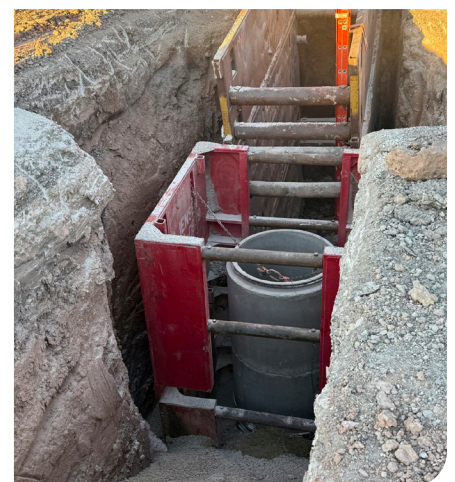
Week of January 26, 2026



## A LOOK FORWARD:

### WEEK OF FEBRUARY 2

- Contractor to complete installation of sanitary sewer within County LL and will begin installing sanitary sewer laterals within the easement area adjacent to County LL.
- Jack and bore subcontractor will return to begin water main casing jack and bore on Highland Lane.



## PROJECT UPDATES:

**JANUARY  
26**

Contractor excavated the water main jack and bore pits on Highland Lane.

**JANUARY  
27**

No work due to weather.

**JANUARY  
28**

Contractor continued sanitary sewer construction within County LL to northeast.

**JANUARY  
29**

Contractor continued sanitary sewer construction within County LL to northeast.

**JANUARY  
30**

Contractor continued sanitary sewer construction within County LL to northeast.