

CITY NEWS & INFORMATION



City of Port Washington Website - www.portwashingtonwi.gov

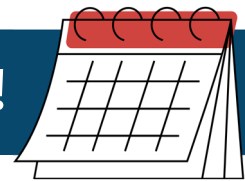


- Subscribe to our Monthly Newsletter via this [link](#)
- Paper copies available at City Hall, W.J. Niederkorn Library, Senior Center



Follow us on Social Media - [Facebook](#), [Instagram](#), [LinkedIn](#)

KEY DATES - MARK YOUR CALENDARS!



Street Yard

- Season Open/Close:
Thursday, April 2, 2026 - Saturday, December 5, 2026

Curbside Brush Collection

- Bi-Weekly: April 27 - May 25, 2026
- Weekly: June 8 - August 24, 2026
- Bi-Weekly: September 7- October 5, 2026
- Note: During Curbside Collection - NO Brush Accepted at Street Yard

Fall Leaf Collection

- October 5 - Week of November 23, 2026 (*Weather Dependent*)

Holiday Tree Collection

- January 2026

Winter Parking

- December 1 - April 1, 2026
- “No parking on any street within city limits between the hours of 2:00am and 6:00am”. This includes the evening of November 30.” (City Code - [Ch. 400-13](#))
- **NEW:** Submit an Overnight Parking Request: portwashingtonwi.gov/winterparking

THE STREET YARD & SEASONAL CLEANUP

The Department of Public Works Street Yard is a community resource for Port Washington residents only. Please utilize as a tool to keep our city clean and green!

Location: 333 N Moore Rd

Contact: 262-284-2600

Season Open/Close:

April 2, 2026 - December 5, 2026

Hours:

- *Tuesday, 3:00pm-6:00pm*
- *Thursday, 3:00pm-6:00pm*
- *Saturday, 10:00am-4:00pm*

Special Dumpsters For:

- *Cardboard and white paper only (no Styrofoam or plastic)*
- *Invasive species (Garlic Mustard, Yellow Mustard, Dames Rocket, Burdock, Thistles)*
- *No bags in dumpsters*

Accepted:

- *Grass clippings*
- *Leaves, stumps*
- *Dead plants, Weeds*
- *Sod, Root balls*
- *Stones, brick, broken concrete, gravel*

Not Accepted:

- *Treated lumber*
- *Wood fences*
- *Wood pallets*

Note:

- *Branches are accepted at the Street Yard ONLY after Curbside Brush Collection (see below), not during.*

Fall Leaf Collection



October 5 - Week of November 23, 2026

- *Leaves only to curb by Monday at 7AM*
- *One trip made city-wide weekly for pick-up*
- *Leaves also accepted at Street Yard*

Grass Clippings

Do not mow or blow grass clippings into street!

- *Slippery for pedestrians, cyclists, vehicles*
- *Negatively affects water supplies*
- *Deprives lawn of nutrients*
- *Take grass clippings to Street Yard*

Holiday Tree Collection



January 2026

- *Natural trees place at curb (no plastic bags)*
- *Pick-up - several times during January*
- *Remove stand, lights, ornaments*

Mulch/Dirt at Street Yard

- *Mulch and dirt can be taken from the piles*
- *Mulch (old, bark, dyed) is ok to dump on pile*

Curbside Brush Collection

ONLY "Woody" material trimmed from trees/shrubs (8 inch diameter or less) accepted. Place at curb by 7AM Monday. One trip is made city wide during the designated week. Stack brush in neat and manageable piles (not exceeding three feet) near curb, in parkway area. Do not place in street. Cut ends facing street. Small twigs and brush place in an open container for pick-up (no bags).

Narrow curb (parkway area) place in neat piles behind sidewalk (in yard). Alley pickup not available. Call 262-284-2600 for pick up. Brush piles five feet high and 15 feet long can be "hailed away" at a \$60 charge.

- **Bi-Weekly:** April 27 - May 25, 2026
- **Weekly:** June 8 - August 24, 2026
- **Bi-Weekly:** September 7 - October 5, 2026
- **During Curbside Collection-NO Brush Accepted at Street Yard**